

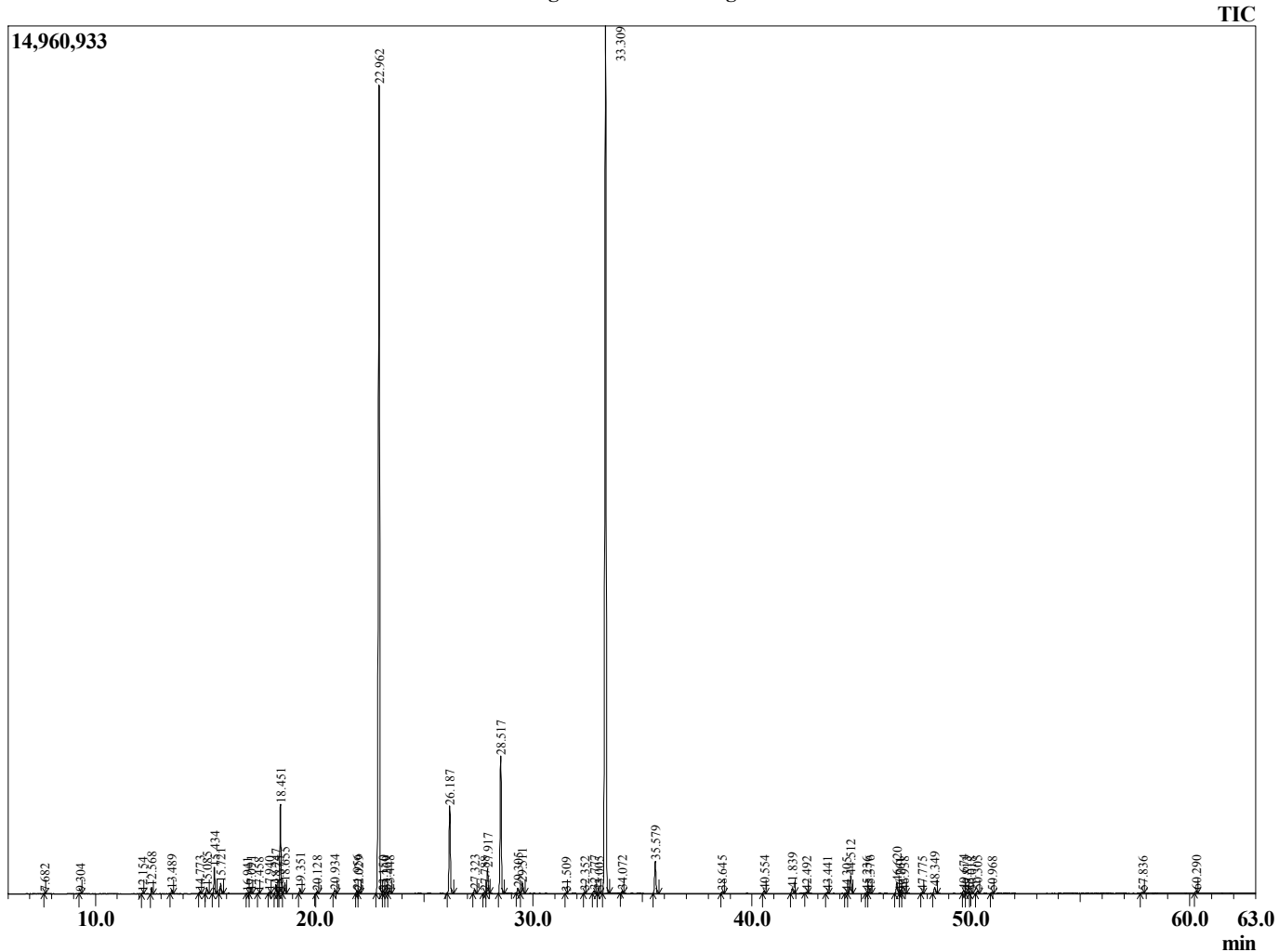
Sample Information

Sample Type : Essential Oil
 Sample Name : Lavandula angustifolia :
 Injection Volume : 0.10



Lavender 40/42
 Lot# FRK01-KW
 France

Chromatogram Lavandula angustifolia



Retention Time (min)	Peak Name	Area (%)
7.682	Hexyl methyl ether	0.02
9.304	n-Hexanol	0.03
12.154	alpha-Thujene	0.04
12.568	alpha-Pinene	0.21
13.489	Camphene	0.13
14.773	Sabinene	0.07
15.085	beta-Pinene	0.24
15.434	3-Octanone	0.92
15.721	Myrcene	0.37
16.941	delta-3-Carene	0.03
17.091	Hexyl acetate	0.07
17.458	alpha-Terpinene	0.03
17.940	para-Cymene	0.05
18.247	Limonene	0.35
18.375	beta-Phellandrene	0.02
18.451	1,8-cineole	3.37
18.655	cis-beta-Ocimene	0.40
19.351	trans-beta-Ocimene	0.19
20.128	gamma-Terpinene	0.07
20.934	trans-Sabinene hydrate	0.16
21.956	Terpinolene	0.14
22.029	trans-Linalool oxide (furanoid)	0.08
22.962	Linalool	36.12
23.150	Hotrienol	0.07
23.269	Hexyl propionate	0.06
23.448	1-Octen030yl acetate	0.11
26.187	Camphor	3.80
27.323	Lavandulol	0.15
27.788	delta-Terpineol	0.05
27.917	Borneol	1.08
28.517	Terpinen-4-ol	6.00
29.305	Hexyl butyrate	0.23
29.511	alpha-Terpineol	0.44
31.509	Nerol	0.02
32.352	Hexyl 2-methylbutyrate	0.03
32.777	Hexyl 3-methylbutyrate	0.12
33.005	Unidentified	0.06
33.309	Linalyl acetate	40.17
34.072	Unidentified	0.09
35.579	Lavandulyl acetate	1.45
38.645	Hexyl tiglate	0.08
40.554	Neryl acetate	0.10
41.839	Geranyl acetate	0.22
42.492	7-epi-Sesquithujene	0.04
43.441	Sesquithujene isomer	0.04
44.305	Unidentified	0.03
44.512	beta-Caryophyllene	0.88
45.236	Coumarin	0.03
45.376	trans-alpha-Bergamotene	0.07
46.290	trans-beta-Farnesene	0.51
46.761	alpha-Humulene	0.03
46.938	Unidentified	0.05
47.775	Unidentified	0.03
48.349	Germacrene D	0.30
49.674	Lavandulyl isovalerate	0.15
49.813	(E,E)-alpha-Farnesene	0.05

R.Time	Name	Area%
50.018	beta-Bisabolene	0.06
50.305	gamma-Cadinene	0.12
50.968	beta-Sesquiphellandrene	0.05
57.836	tau-Cadinol	0.06
60.290	alpha-Bisabolol	0.10
		100.00